



FULL REGISTRATION PACKAGE:

- Full CPD Points
- Entry to all functions & seminars
- Delegate Pack

Before 25/12/2010
**\$600.00 + GST
 per person**

PARTNER PACKAGE:

- Includes GIB Partners Tour
- Entry to all functions & seminars

After 25/12/2010
**\$650.00 + GST
 per person**

ADDITIONAL FUNCTION TICKETS

Additional single tickets for the Welcome Function and Gala Dinner can be purchased. (These are included in the Full Registration Package above.)

HAPPY HOUR & WELCOME FUNCTION

Saturday 25th June 2011

**\$175.00 + GST
 per person**

GALA DINNER

Sunday 26th June 2011

**\$220.00 + GST
 per person**

GALA DINNER (Table for 10)

Sunday 26th June 2011

**\$2000.00 + GST
 per table**

**Register now to attend
 by fax to +64 9 379 3358
 online at www.buildnz.com/rmbf
 by phone 0800 367 976 or +64 9 976 8300**



**RMBF Conference
 Sponsors**



Platinum Sponsor



Gold Sponsors



"We'll see you right"

Silver Sponsors



Bronze Sponsors



**Register now to attend the RMBF Conference
 by fax to +64 9 379 3358
 online at www.buildnz.com/rmbf
 by phone 0800 367 976 or +64 9 976 8300**

buildnz | designex | 2011

Official Publications



Endorsed by



RMBF CONFERENCE DATES

Saturday 25 June 2011

Sunday 26 June 2011

**Register now to attend the RMBF Conference
 by fax to +64 9 379 3358
 online at www.buildnz.com/rmbf
 by phone 0800 367 976 or +64 9 976 8300**



Registered Master Builders Conference 2011

RMBF 2011 Conference: What's involved?

- For the first time ever the RMBF conference will run alongside buildnz | designex exhibition
- Your chance to mingle with 1000's of member colleagues, sponsors and other related trade visitors
- An impressive lineup of educational speakers/workshops
- Full paying delegates will obtain CPD accreditation – a major contribution towards builder licensing requirements in one hit
- Full paying delegates enjoy all networking activities: AGM, Morning Teas, Happy Hour, Lunches, Opening Night Function, Gala Dinner and VIP lounge at buildnz
- A special RMBF Conference Hotel rate has been negotiated (subject to availability)

- Includes transfers between conference, Buildnz and evening functions where appropriate
- GIB Partners Tour
- Win win win prizes! (see below)

The biggest brands in our industry are supporting this conference /event. It's now time for you to do the same. Book your delegates today for early bird rates.

EARLY BIRD RATE

Book before 25/12/2010 and receive a discount.
\$600.00 + GST per person
(normally \$650.00 + GST per person)

GROUP DISCOUNT

Book 5 or more Full Delegate "Early Bird" Packages before 25/12/2010 and get one free



buildnz | designex | 2011

Show dates

Sunday 26 June, 10am - 6pm

Monday 27 June, 10am - 7 pm

Tuesday 28 June, 10am - 5 pm

ASB Showgrounds, Greenlane, Auckland, New Zealand



Buildnz | designex is the ultimate event for all those associated with the building, design and interiors industries in New Zealand. Bringing together the many facets of New Zealand's construction industry, along with a large selection of design, interiors, textiles and lighting conveniently located under the one roof.

An unmissable opportunity to connect with new suppliers and business contacts, buildnz | designex goes the extra mile to bring you an incredible variety of new products and services.

Win



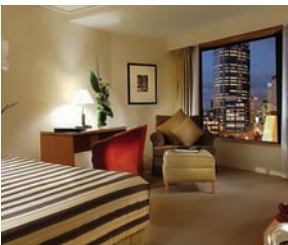
All Conference Delegates are in with a chance to win a \$1000 voucher from Telecom.

Terms & conditions apply



Official RMBF Conference Hotel Accommodation Offer

Get your accommodation now and receive a special early bird rate of just \$150.00 (including GST) per room per night at the Rendezvous Hotel Auckland. This special offer is on a first come first serve basis and will run out, and remember its rugby world cup year, so get in quickly to ensure you don't miss out. SEE THE ENCLOSED ACCOMMODATION BOOKING FORM.



In association with Ford & Radio Hauraki

Be In To Win



Every visitor who pre-registers and visits the Ford stand at buildnz | designex will be entered in the draw to win a Ford Ranger XLT 2WD Double Cab Ute - valued at \$46,990.

For more information visit www.buildnz.com



Terms & conditions apply.